

# RED HAT SATELLITE 6

Red Hat Enterprise Linux system management

DATASHEET

## RED HAT SATELLITE HIGHLIGHTS

- Efficiently manage the Red Hat infrastructure life cycle
- Easily create and manage instances on bare metal, virtual machines, and private and public clouds
- Quickly and easily manage configuration across thousands of systems
- Powerfully manage content across RPMs, Red Hat container hosts, containers, and Puppet modules

## PRODUCT OVERVIEW

Red Hat® Satellite is a system management solution that makes Red Hat infrastructure easier to deploy, scale, and manage across physical, virtual, and cloud environments. This management tool helps users provision, configure, and update systems to keep them running efficiently, securely, and in compliance with various standards. By automating most system maintenance tasks, Red Hat Satellite helps organizations increase efficiency, reduce operational costs, and enable IT to better respond to strategic business needs.

## RED HAT SATELLITE 6 CAPABILITIES

Red Hat Satellite automates many tasks related to system management and easily integrates into existing workflow frameworks. The centralized console gives administrators a single location for accessing reports and for provisioning, configuring, and updating systems.

### PROVISIONING

Now administrators can provision on bare metal, virtualized infrastructure, and on public or private cloud environments—all from a centralized console using one simple process.

FEATURE	DESCRIPTION
Provision on bare metal	Quickly provision and update your entire bare-metal infrastructure
Provision on Red Hat Virtualization, Red Hat OpenStack® Platform, VMWare, or Amazon EC2	Easily create and manage instances across virtualized infrastructure or private and public cloud environments
Provision Red Hat Enterprise Linux® Atomic Host	Easily deploy your Red Hat Atomic Platform container management host layer
Provision using templates	Create complex Kickstart and Pre-Boot Execution Environment (PXE) scenarios with powerful variables and snippets
Perform system discovery	Discover and search across nonprovisioned hosts for rapid deployment, even in environments where Dynamic Host Configuration Protocol (DHCP) and PXE are not available



facebook.com/redhatinc  
@redhatnews  
linkedin.com/company/red-hat

## ARE YOU A RED HAT SATELLITE 5 CUSTOMER?

Talk with your Red Hat account manager and prepare for your move to Red Hat Satellite 6.

### CONFIGURATION

Analyze and automatically correct configuration drift and control, and enforce the desired host end-state, all from the Red Hat Satellite user interface (UI). This interface lets you efficiently configure Red Hat Enterprise Linux systems for greater agility.

FEATURE	DESCRIPTION
Puppet Forge and Git integration	Integration for synchronizing Puppet modules helps you to manage, promote, and distribute configuration easily across your environment
Drift remediation	Automatically corrects system state with complete reporting, auditing, and history of changes
Remote execution	Automates workflows and lets users take multiple actions against groups of systems—including rebooting a system after a patch install and conducting rolling upgrades across hundreds of systems

### SOFTWARE MANAGEMENT

Red Hat Satellite helps ensure the systematic application of content, including patches, to deployed systems—on physical, virtual, or cloud infrastructures—in all stages. This approach ensures greater system consistency and availability and frees IT to respond more quickly to business needs and vulnerabilities.

FEATURE	DESCRIPTION
Content views	Content views are collections of RPMs, Puppet modules, container content, or OSTree content refined with filters and rules. Content views are published and promoted throughout life-cycle environments, enabling end-to-end system management
Red Hat Content Delivery Network (CDN) integration	Integration with Red Hat CDN lets users control synchronization of Red Hat content straight from the UI
Federated life-cycle management	Allows distribution and federation of provisioning, configuration, and content delivery via Red Hat Satellite Capsule Server
Streamlined content synchronization	Build systems almost immediately after install while content downloads in the background

### SUBSCRIPTION MANAGEMENT

Easily report and map your Red Hat products to registered systems for end-to-end subscription consumption visibility.

FEATURE	DESCRIPTION
Subscription management	Easily import and manage the distribution of your Red Hat software subscriptions
Built-in reporting engine	Report and map your purchased products to registered systems within Red Hat Satellite for end-to-end subscription usage visibility

## LEARN MORE ABOUT RED HAT SATELLITE

Download the latest version of Red Hat Satellite and access documentation in the Red Hat Customer Portal <https://access.redhat.com/products/red-hat-satellite>.

## ARCHITECTURES

Connect your Red Hat managed systems to Red Hat Satellite on-premise, rather than connecting systems directly to a Red Hat hosted solution. With Red Hat Satellite and Red Hat Satellite Capsule Server, managing your growing Linux environment is easier than ever.

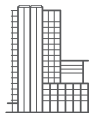
### Red Hat Satellite Server

Red Hat Satellite Server connects directly to Red Hat to download updates and synchronize content but also has the flexibility to work in a completely disconnected environment. Red Hat Satellite capabilities include:

- Multitenancy.
- User and group role-based access control (RBAC) with external directories.
- Powerful graphical user interface (GUI), command-line interface (CLI), and application programming interfaces (APIs).
- Advanced subscription management.

### Red Hat Satellite Capsule Server

Red Hat Satellite Capsule Server facilitates content federation and distribution, in addition to other localized services, including Puppet master, DHCP, Domain Name System (DNS), and Trivial File Transfer Protocol (TFTP). Satellite Capsule Server helps you easily scale Red Hat Satellite as the number of managed systems increases in your environment. It connects with Red Hat Satellite Server to enable localized systems management, including federated services and provisioning.



## ABOUT RED HAT

Red Hat is the world's leading provider of open source software solutions, using a community-powered approach to provide reliable and high-performing cloud, Linux, middleware, storage, and virtualization technologies. Red Hat also offers award-winning support, training, and consulting services. As a connective hub in a global network of enterprises, partners, and open source communities, Red Hat helps create relevant, innovative technologies that liberate resources for growth and prepare customers for the future of IT.



facebook.com/redhatinc  
@redhatnews  
linkedin.com/company/red-hat

**NORTH AMERICA**  
1 888 REDHAT1

**EUROPE, MIDDLE EAST,  
AND AFRICA**  
00800 7334 2835  
europe@redhat.com

**ASIA PACIFIC**  
+65 6490 4200  
apac@redhat.com

**LATIN AMERICA**  
+54 11 4329 7300  
info-latam@redhat.com